



U L T I M A T E
POWER

OPERATING GUIDE

12V POWER POD



**12V
POWER POD
BY
ULTIMATE
POWER**





The Ultimate Power Pod is located on the street side behind the driver.



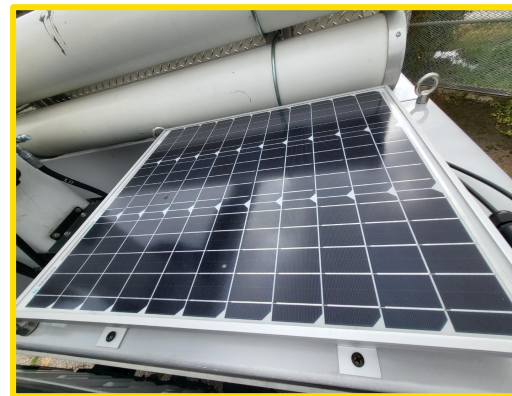
SMART Hub Display



Each Power Pod is equipped with a SMART Hub located inside the front door that provides information pertaining to battery voltage, temperature, state of charge and number of cycles, and also monitors the inverter status.



Inside the Ultimate Power Pod are (4) 12V 100Ah Lithium-Ion Batteries and (1) 3000W Square Design (120V) Inverter.



SOLAR PANEL



CONTROLLER

On top of the Ultimate Power Pod is a 50W Solar Panel to help mitigate parasitic loads with a solar controller located inside the front door. This protects the batteries when the truck is non-operational for extended periods of time.

The solar panel controller is located inside the front door of the Power Pod.



Unplug truck from shore power before operating.



Before leaving for the job site, the operator must unplug the truck from shore power.

The Ultimate Power Pod is equipped with an auto eject feature to prevent damage in case the operator does not unplug from shore power.



Plug truck in to shore power overnight.

At the end of each workday, the operator must plug the truck back into shore power to ensure that the batteries are fully charged for the next workday.

Better Built Better Solutions Better Environmentally

**CONTACT
US**

U L T I M A T E
POWER

YOUR CHOICE WHEN PERFORMANCE MATTERS



115 N. East St.
Coudersport, PA 16915



888.447.5920
Opt 1 - Sales
Opt 2 - Operations
Opt 3 - Technical Support



www.ultimatepower.com



info@ultimatepower.com